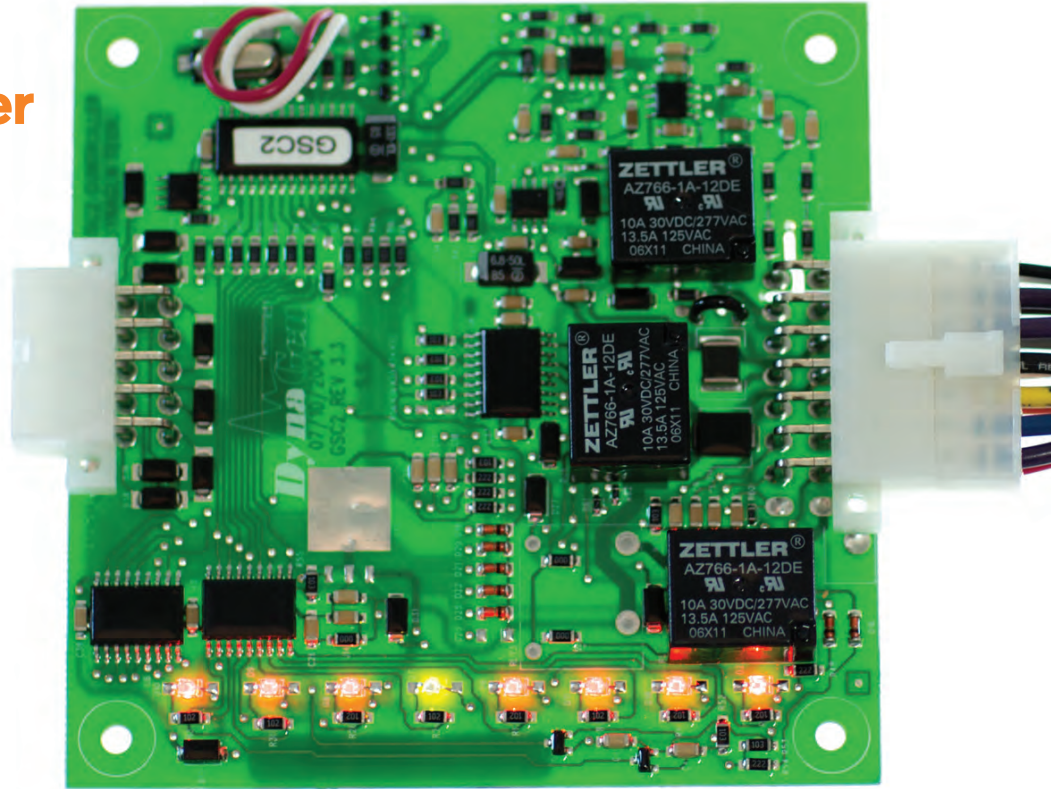


GSC102

Autostart Controller

OEM Autostart Solution
for Small Gensets:
Portables/Residential/Light
Commercial

The GSC102 Series is a low cost, full-featured autostart for small generator installations. Factory-fixed settings prevent unauthorized field tampering. The GSC102 is conformally coated to protect against the elements and carries a 5-year warranty. The unit is supplied as a circuit card to be mounted within a customer supplied panel with appropriate labeling.



Non-Adjustable Settings

- Crank Disconnect (20Hz)
- Overspeed (69Hz)
- Crank Tries (3)
- Crank/Rest (10s)

General Fault Conditions

- Low Oil
- High Engine Temperature
- Overcrank
- Overspeed
- Underspeed (58.5Hz for 10s)
- Low Battery Voltage (11V)

Not In Auto

NOT-IN-AUTO LED will illuminate when the external AUTO/OFF/TEST switch is not in AUTO.

Failure Inputs

Close to +BAT or to Ground.

Speed Signal

Accepts up to 300VAC, 60Hz from Direct Generator Output.

Time Delay Engine Start (TDES)

Provides a delay (10s) before the engine is started.

Optional Cool-Down Period

Wire jumper (2 mins).

SPECIFICATIONS

Operating Voltage

- 5 to 16VDC continuous
- Standby Current Draw: 8mA at 12VDC
- Reverse battery protected
- Surge withstand: 1500V for 250 μ S

Operating Temperature

- Controller Function: -40 to +85 °C

Physical

- Dimensions: 4.0"H x 4.0"W x 0.47"D
- Weight: 0.15 lb

Speed Sensing

- Generator Output: Up to 300VAC (no external transformer required)

Failure Inputs

- Low oil pressure switch failure* (closed on failure)
- High engine temp failure* (closed on failure)

*Failure inputs can close to either +battery or ground. All failure inputs are ignored for a period of 15 seconds at engine startup.

Outputs

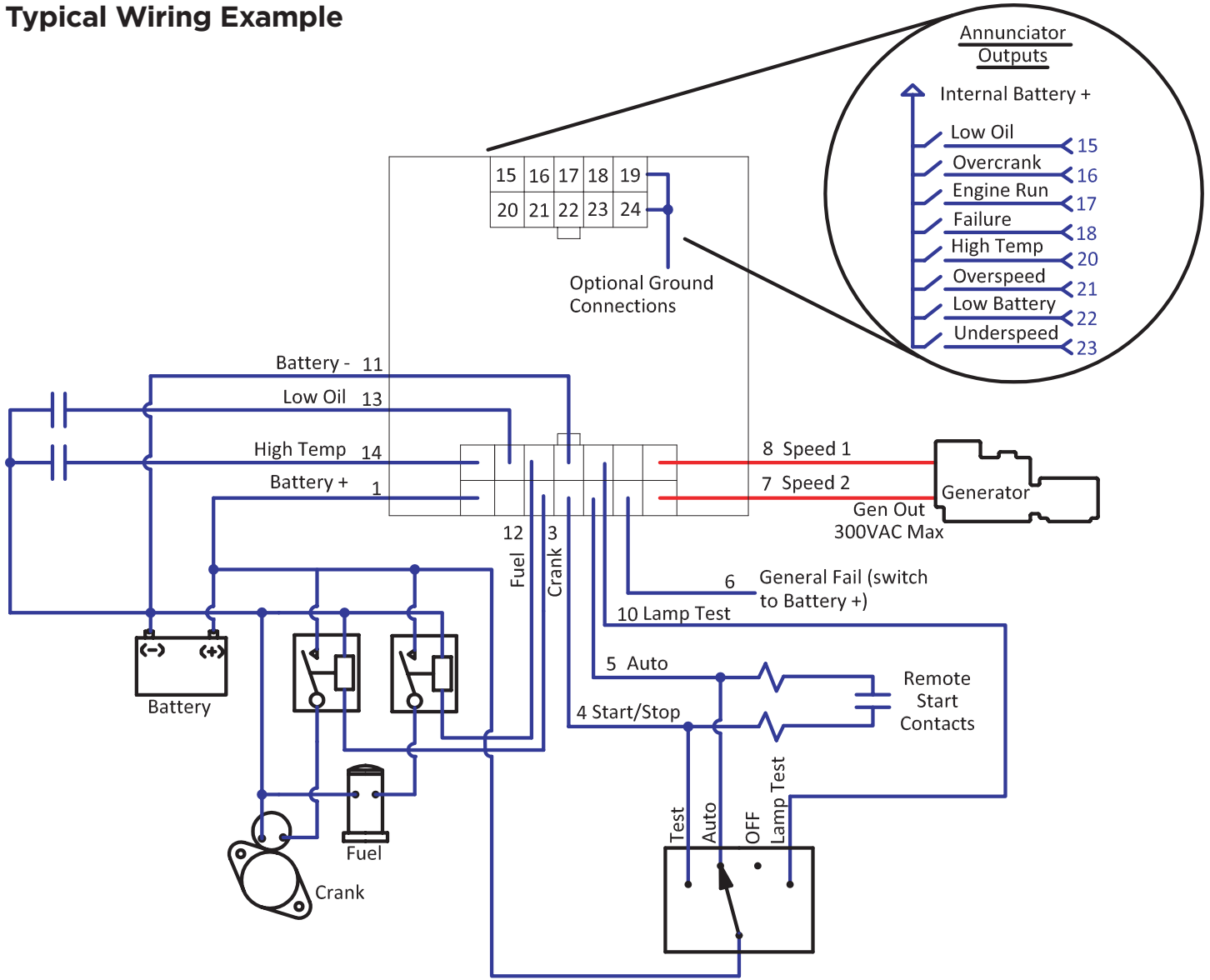
- Fuel & Crank
- 1A relays
- Switched to battery positive

Short circuit & overload protection on annunciation outputs (rated 300ma max).

Connectors

- Main control mating plug: Dual Row Plug 2x7 Molex 39-01-2140
- Annunciator mating plug: Dual Row Plug 2x5 Molex 39-01-2100

Typical Wiring Example



Ordering Information

Part No: GSC102-L-12

Available Accessories:

HAS0025 - Main Engine Control Wiring Harness 4ft

DWG1377- Annunciator Harness 5ft

DWG1410 - Extra Pre-Crimped wires 5ft (package of 5)